

Monthly Newsletter

MAIN STREET *Beatrice*

2025 EVENTS

JUNE 21

Ribfest at Stone Hollow
Brewery

SCAN ME



SUMMER

Summer Shopping
Event

AUGUST

Taste of Downtown

NOW-OCTOBER 9

Farmer's Market
Thursdays 4-6:30pm

OCTOBER

Night of the Great
Pumpkin

NOVEMBER

Governor's Pheasant
Hunt

DECEMBER

Holiday rides with
Santa

SATURDAY JUNE 21ST

4pm-11pm

Several BBQ Vendors, Lemonade & Sweets/Snacks,
Live Music, Beers & Cocktails
Tickets: \$8 Card or \$7 Cash



BE@TRICE
Live Vibrantly. Embrace Main.

205 N 4th St. - Beatrice, NE 68310 - 402-223-3244 - director@mainstreetbeatrice.org



The Beatrice Farmers Market, now under the management of PLANT Alliance, is in its 28th year of serving the community by offering a downtown farmers market. Support local farmers by shopping for produce, eggs, honey, baked goods, and crafts every Thursday until October 9 from 4:00 to 6:30 at 6th & High.

To learn more, visit us on Facebook at facebook.com/beatricefarmersmarket or email us at beatricefarmersmarket@gmail.com.



MAIN STREET BEATRICE OPPORTUNITIES

REVOLVING LOAN FUND
10 year term
1.9% interest rate
Avg. loan is \$10,000
Available for new & existing businesses

SMALL BUSINESS SUPPORT
Planning, funding, transitioning, technical assistance, networking & community engagement opportunities

SPONSORSHIP & PARTNERSHIP
Sponsorship Appeal letters went out a couple months ago. If you did not receive yours in the mail, go to mainstreetbeatrice.org and click on "Become a Sponsor"

VOLUNTEERS
If you would like to get involved with events and network, let us know and we'll add you to the list.

BARGAIN BOX



Volunteers Wanted

Store Hours
Thursday & Friday
9:30am-4:00pm
Saturday
9:30am-12:00pm

2025 Outstanding Campaign Award



BE@TRICE
Live Vibrantly. Embrace Main.

presented to
Main Street Beatrice
by Gage County Tourism

Always do your best. What you plant now, you will harvest later.

-OG MANDINO-

The Director's



Last month's Beer & Wine Festival that was held at Envision Landscapes & Garden Center was a success. All the feedback we heard from those who attended the event was incredibly positive. The weather was beautiful, the music was fantastic and the atmosphere & environment was peaceful & serene. We are incredibly grateful to the Envision staff for their hard work; their efforts made everything flow seamlessly. Based on glassware counts, we had 247 attendees who participated in the Beer & Wine tastings. A large majority of attendees were from Beatrice, however, a noteworthy amount of people came from Lincoln, NE, Marysville and other towns in Kansas. We even had people from Oklahoma, Tennessee and Texas attend.

As with all good things there will always be disagreements with decisions that are made. I am aware that there were some who passionately disagreed with the decision to move the event from Charles Park to Envision this year. To those who found the decision disagreeable: my apologies. Main Street Beatrice is a nonprofit and both Board members and staff do our best to leverage resources in a responsible manner. One of those resources is volunteers. We are truly grateful for the volunteers that invest their time into making MSB events successful. In recent years volunteer numbers have been decreasing, so if you are someone who is passionate about downtown Beatrice, we encourage you to get involved and volunteer.

There are many different ways to get involved and support the heart of downtown Beatrice through Main Street Beatrice. One of the obvious ways is through monetary means (Partnerships & Sponsorships), but we also need volunteers. Ribfest is coming up on June 21st and we could use some passionate volunteers; email me at director@mainstreetbeatrice.org to get on the list. As the old saying goes: Many hands make light work; a hearty thank you to all who contributed to making the Beer & Wine Festival a wonderful success!!!

-Virginia Gifford
MSB Executive Director

KABO BAR

Bike
Show



Kickstands Up at Kabo.

Abate 11 Bike Show June 14th .

Registration is \$10.00 to enter your bike and starts at 3pm-5pm, judging is 5pm-6pm. Come enjoy live music provided by Kent Siebe, great food and great company and the coldest beer in town. \$5.00 door fee donated to Beatrice Food Bank. \$10.00 per plate and a 50/50 raffle. Don't miss this!!!

JUNE 14TH

There's Space Here for you!!!



301 Court Street (The Brewery Building Upstairs) – Call Hydo Properties at 402-239-2982. Called the Beatrice Mercantile Building this location is quite active with 5 shops operating on the ground level and basement. The second level is scheduled to be finished in 2024 and the owners are actively looking for tenants that would complement the other shops in their building. The second floor is accessed via stairs or an elevator. Lots of historic character and will be newly remodeled. Rent typically will include utilities and is dependent on the size of space and amount of work needed for the build-out.



106 North 5th Street – Formerly the VIP Bar and Coffee Bistro Café. This space is around 1,300 square feet on the ground floor, and has a bar counter area, a walk-in refrigerator, two restrooms, and commercial grade sinks. The owner is Tracy Crawford, he can be reached at 402-228-0596. Will be available after 2nd floor apartment renovation is completed.



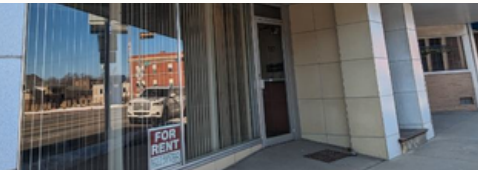
601 Court Street – Court Street Plaza – Court Street Plaza at 6th & Court – Pat Beach 402-230-0690
The 2nd level is primarily set up for office space. This location has utilities included in the rent. The entire building has great visibility and access to on-street parking as well as a dedicated private parking lot. Upper levels can be accessed via elevator or stairs.



~~**322 Court Street.** For Lease: 402-239-3741.~~



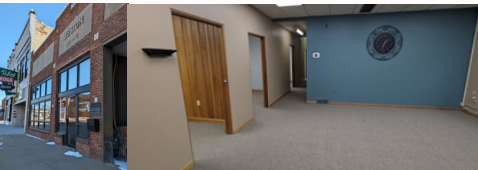
722 Court Street. Second level office space.
Call Ron Maschmeier at 402-239-4156



117 N 6th Street. Call 402-239-9788.



907 Court St, \$850/month +utilities: SRetail-Commercial, 1,940 sqft. 10 Customer parking, 1 handicap, 7 offstreet tenant parking; 1 designated with lease. All walls are not load bearing so they can be moved or removed. Located in Main Street Beatrice district. Washer/Dryer hookups, professional snow removal, handicap accessible bathroom, large windows and large storage area, Contact Jessica Johnson 402-890-3088. jessica@productioncreek.com



707 Court Street New carpet and paint.
Call Jeremy Engelman at 402-520-1885.



621 Court St, \$500/month: Sitting in the heart of downtown Beatrice & just a couple doors down from the movie theater. this 12x12 office space is perfect for the solo entrepreneur who wants downtown exposure. Whether you're an insurance agent, bookkeeper, landscaper or photographer – this prime location could give you the community exposure your business needs. \$500 month includes a private 12x12 office space, a shared lobby area, & utilities are also included. Call or text Tracy for more info, 402.520.0632.

"Some people want it to happen,
some wish it would happen, others make it happen."

-MICHAEL JORDAN-